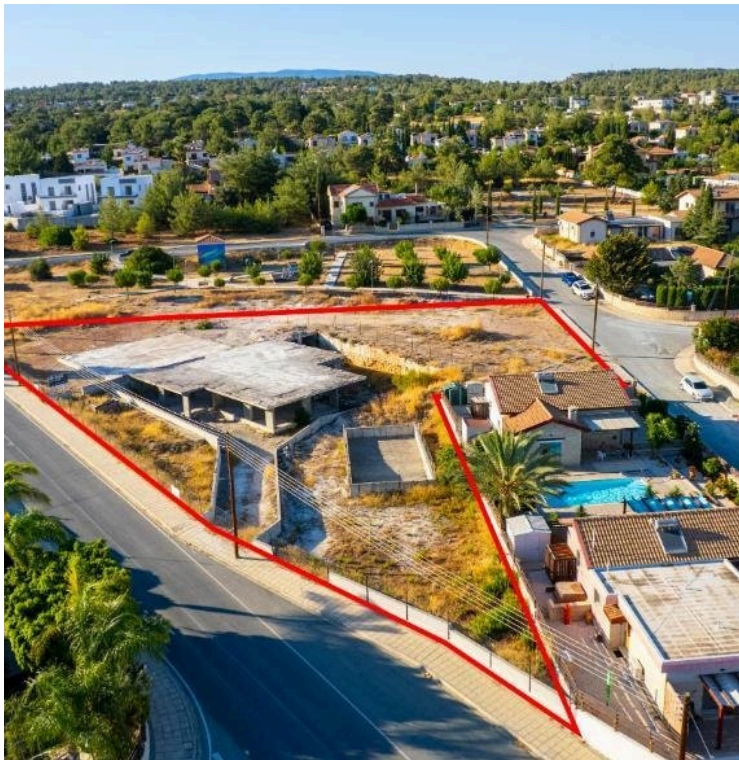


#183086

Residential plot in Souni-Zanakia, Limassol

€500,000





Overview

Specifications

Area

 3040 m²

Type

Building Plot

Description

The property is a residential plot in Souni-Zanakia. It is situated on Antoniou Volou and Aristofanous streets, at a distance of 800m from Archangel Michael's School, 300m from Erimi-Omodos road.

The plot has a land area of 3,040sqm. It is covered by all services (electricity/water supply/ internet).

It abuts onto public roads on its western and eastern boundaries, with a total frontage of 97m and 35m respectively. Furthermore, it abuts onto a public green area with a playground along its northern boundary.

Additional information

Planning zones

Zone	Cover factor	Build factor	Max height	Max floors	Affected percentage
-	20%	20%	-	-	-

Contact us



Marinos Kineyirou

✉ marinosestates@spidernet.com.cy