

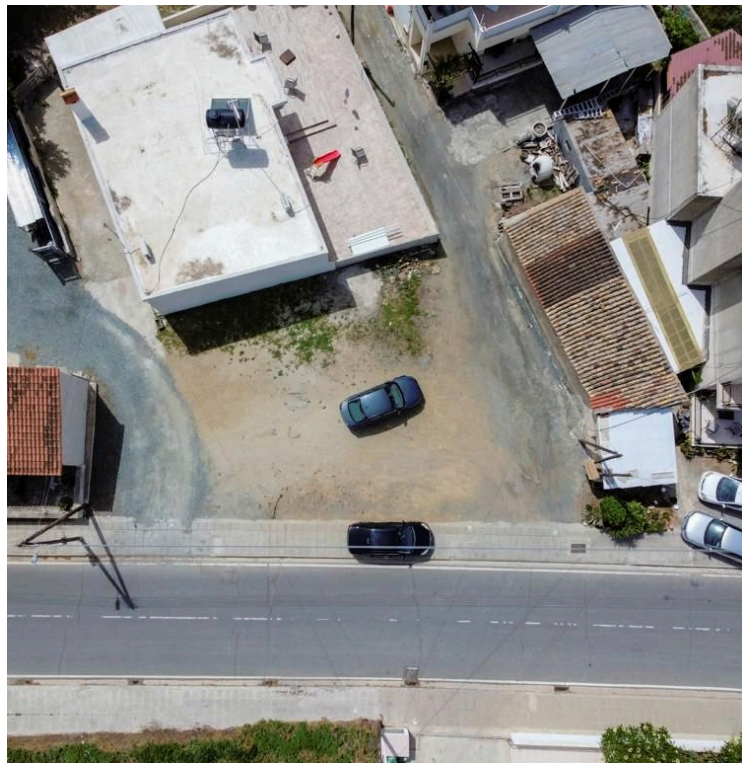
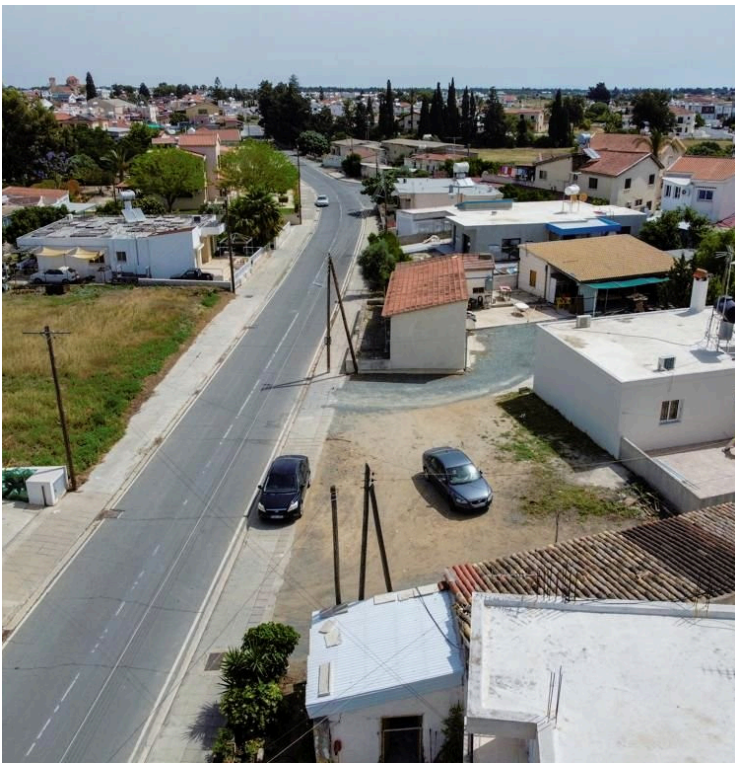
#183138

Residential plot in Kiti community of Larnaca district.

📍 Kiti, Larnaca

€40,000





Overview

Specifications

Area

 298 m²

Type	Building Plot	Title deed	Yes
------	----------------------	------------	------------

Description

Residential plot in Kiti community of Larnaca district. It is situated at a distance approximately 250 m south of Pervolon avenue and approximately 1.1 km east of Mazotos – Kiti road connection.

It has a regular shape and an inclined surface. It abuts onto a public registered road.

It is noted that according to a topographic survey the land area of the property is approximately 325 sqm. While it is subject to an intervention along its southern boundary, of approximately 120 sq.m., by the abutting property.

It lies within residential Town Planning Zone H2 which allows for the development of a two-storey building max 8.3m, with a building factor of 90% and a coverage factor 50%


Planning zone: H2


Additional information

Contact us



Valando Christodoulou

 (+357) 99261111

 marinoskineyirou@gmail.com