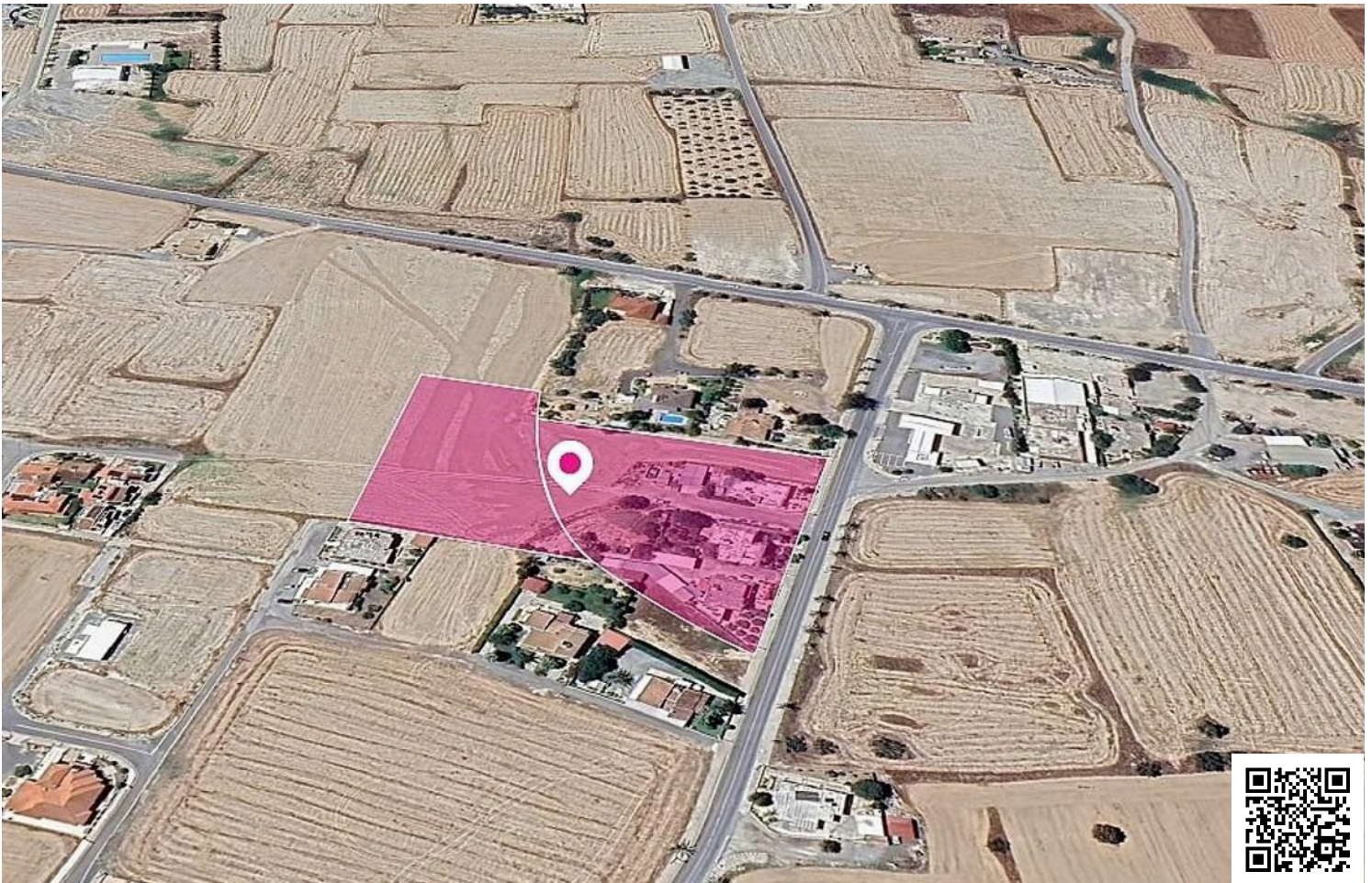
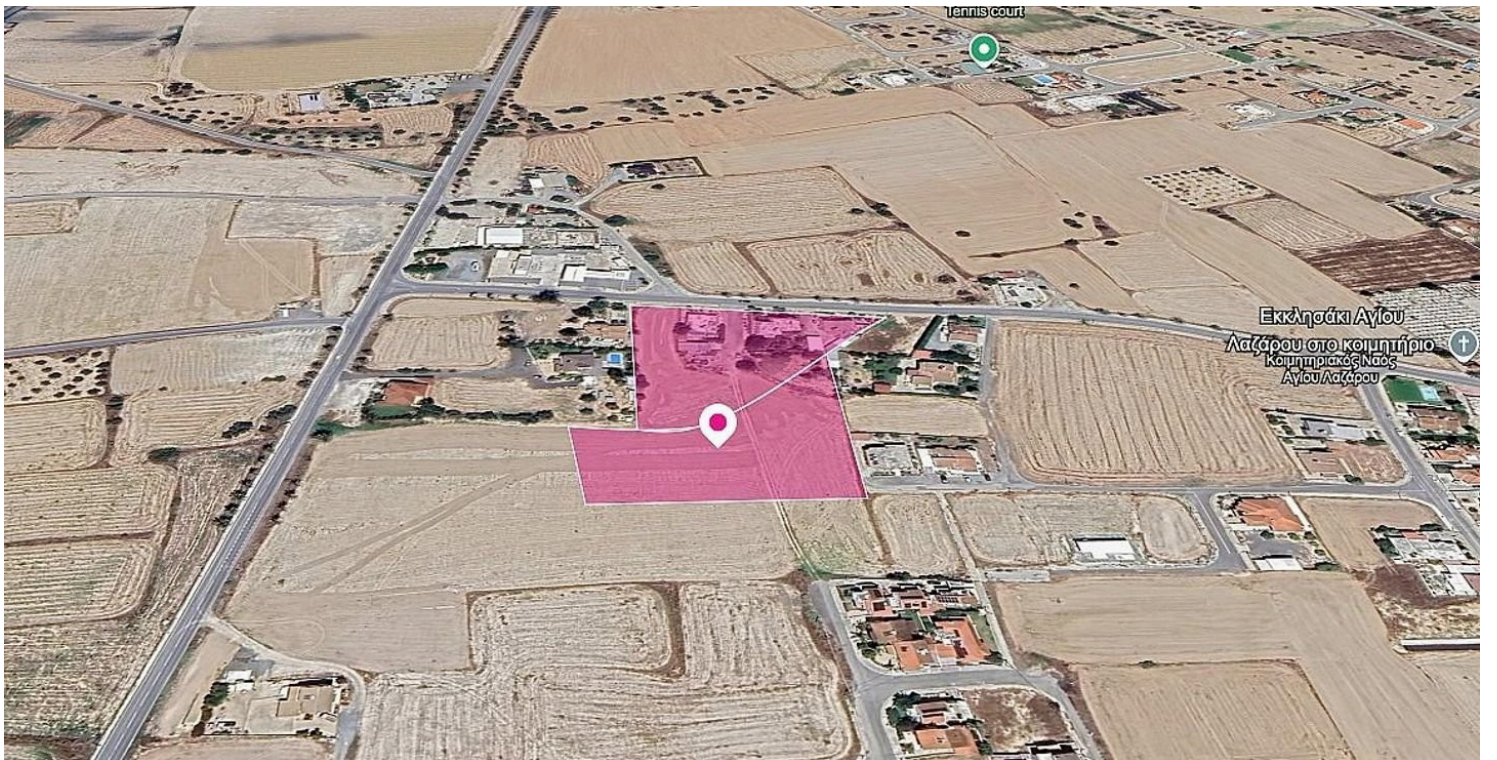


#183446

(Share) Two residential fields in Athienou, Larnaca

€63,000 +VAT





Overview

Specifications

Area

 1969 m²

Type

Field

Description

Presenting two exceptional shared residential fields (TH-20349 - 12.5% and TH-20348 - 16.67%) totaling approximately 13,463 sq.m. of prime land.

These properties feature a flat, easily developable surface, perfect for residential projects.

Key Highlights

Total Land Area: 13,463 sq.m. (approx. 3.3 acres)

Field 1 (12.5% Share): 6,439 sq.m. (with an 804 sq.m. share)

Field 2 (16.67% Share): 7,024 sq.m. (with a 1,165 sq.m. share)

Access: Convenient access via property with Reg.No. 0/33178, offering a generous total frontage of approximately 115m.

These assets are for sale as a bundle of two, offering a unique opportunity for developers or investors seeking a combined landholding with significant potential.

There are separate title deeds for each property.

No distribution agreement in place.

Don't miss out on this rare opportunity to acquire these prime residential fields

The asset is located approximately 950m from Athienou community centre, and approximately 9km from B2 motorway.

This property consists of:

Property with registration number 0/25765, extending to approximately 7,024 sq.m. in total and falls within Zone Ka6, with a building coefficient of 90%, coverage of 50%, and permission for 2 floors (10m) of construction.

Property with registration number 0/33178, extending to approximately 6,439 sq.m. in total and falls within a dual Zone Ka6(53%), with a building coefficient of 90%, coverage of 50%, and permission for 2 floors (8.3m) of



Additional information

Contact us



Marinos Kineyirou

✉ marinosestates@spidernet.com.cy

