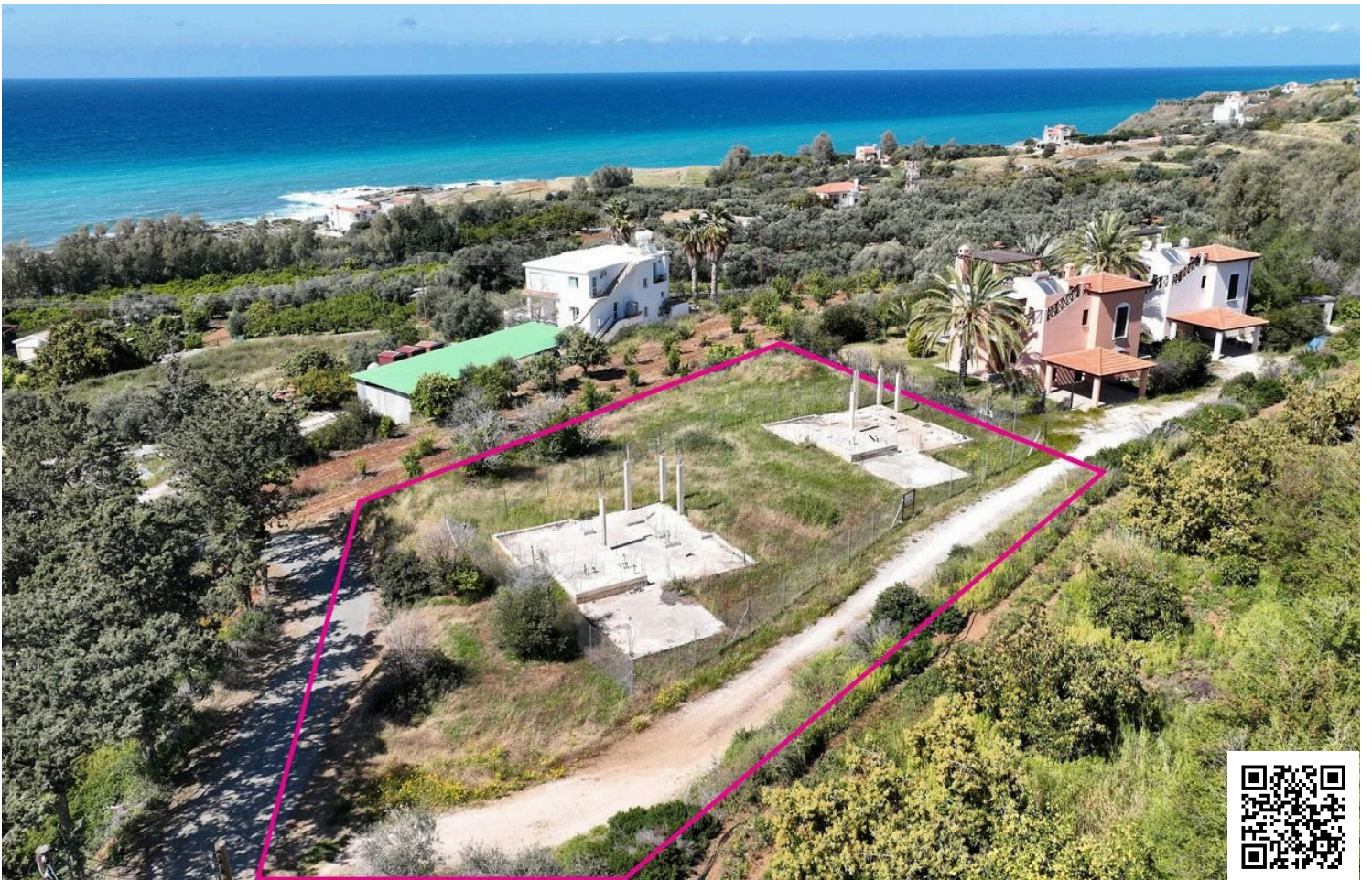


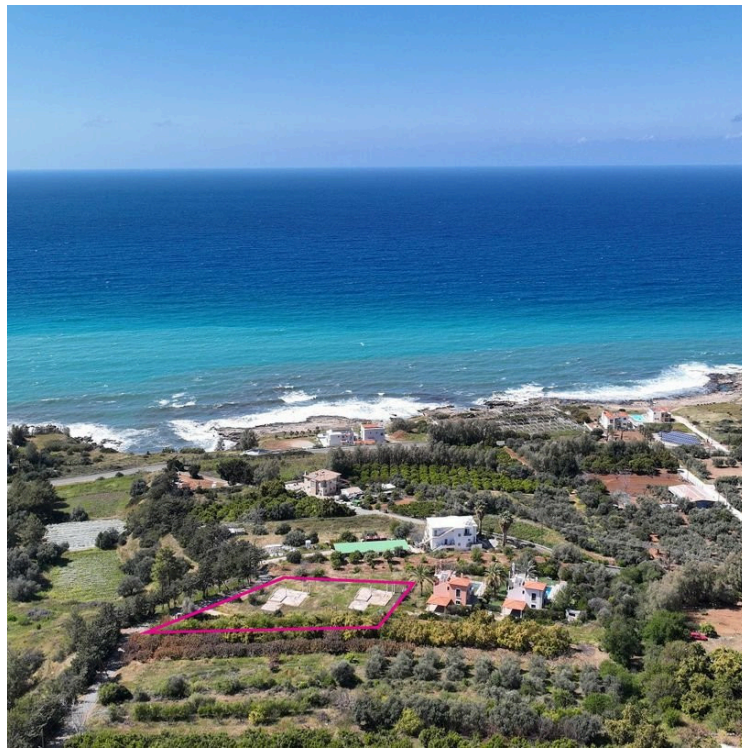
#183726

# Two Incomplete Houses in Nea Dimmata, Paphos

€100,000 +VAT







# Overview

## Specifications

Area

 129 m<sup>2</sup>

Type

Field

## Description

Two incomplete houses of which part of the foundations is completed within a residential field, extending to about 1676 sqm. in total. Access to the field is via a registered road with total frontage of approx.44m. Upon completion (approx. 129sq.m. internal area each) the ground floor of both houses will be comprised of an open plan living/ dining room with a fireplace and a kitchen area as well as a guest bathroom and terraces (25sq.m. uncovered and 38sq,m, covered). The 1st floor will comprise of 2 bedrooms, of which the master is ensuite , a bathroom and terraces. Externally the house will offer a private swimming pool, front and back landscaped garden, storage area(2sq.m.) and a covered parking space(20sq.m.). Distribution agreement in place. The asset is located approx. 350m from the main road and approx. 400m from the sea. The property falls within Zone H7, with a building coefficient of 15%, coverage of 15%, and permission for 2 floors (8.3m) of construction. GPS Coordinates:35.13975400 32.52543500



# Additional information

## Contact us



**Marinos Kineyirou**

✉ [marinosestates@spidernet.com.cy](mailto:marinosestates@spidernet.com.cy)

