

#183992

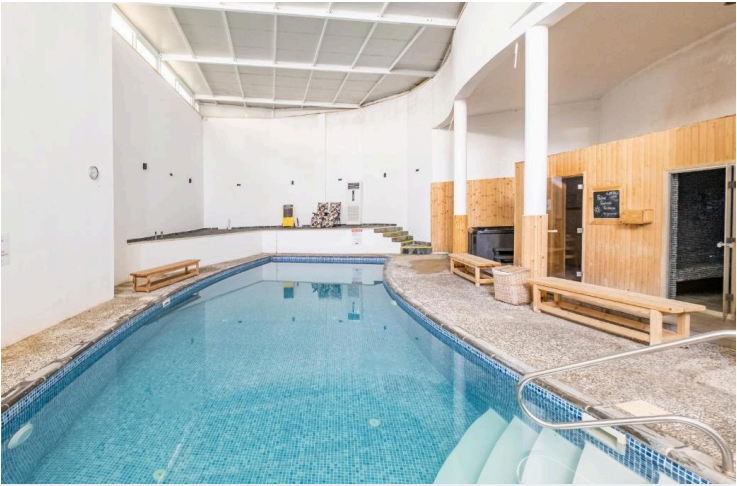
# 2-bedroom apartment in Latchi, Paphos

📍 Neo Chorio Pafou, Paphos

€118,000









# Overview

## Specifications

Bedrooms



1

Bathrooms



1

Covered

**58 m<sup>2</sup>**

Type

**Apartment**

Energy efficiency rating



Status

**Resale**

## Description

The property is a 2-bedroom apartment (A12) in Latchi. It is part of a resort comprising 59 apartments in total (studios, 1 bedroom and 2 bedroom apartments). The resort is located on the edge of the Akamas peninsula natural reserve. It is only a 3 minute drive to Latchi beach and just a short drive from Polis Chrysochous, Latchi harbour and historical attractions.

The apartment has a covered area of 58sqm and covered verandas of 9sqm. It is situated on the upper floor of Block A. It consists of an open plan area with kitchenette, sitting area, two bedrooms and a bathroom with toilet.

The resort currently features an outdoor swimming pool with bar, an indoor saltwater pool and a sauna with indoor pool.

The property is a unique opportunity to acquire your investment or holiday apartment by the sea.

The apartment does not have a separate title deed. Sale to be effected through a Sales and Purchase agreement which will be deposited at the LRO.

Contact details of the Receiver Manager's representative:

Name: Kyriacos Kyriacou

Email: kyriacos.kyriacou@quantuma.com

Contact details of GoGordian Real Estate:

Phone Number: 77 77 56 56



# Additional information

## Contact us



**Marinos Kineyirou**

✉ [marinosestates@spidernet.com.cy](mailto:marinosestates@spidernet.com.cy)

