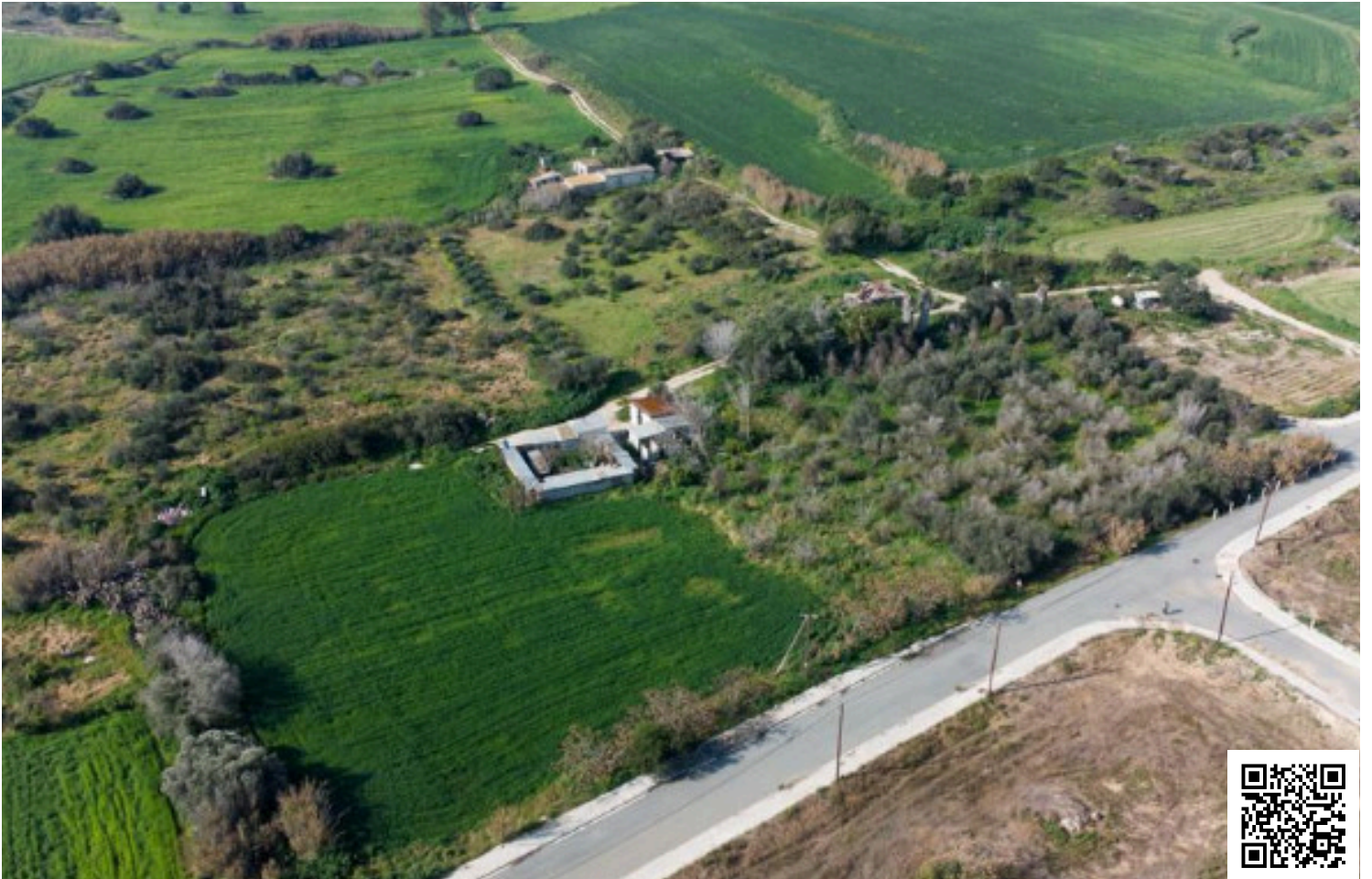


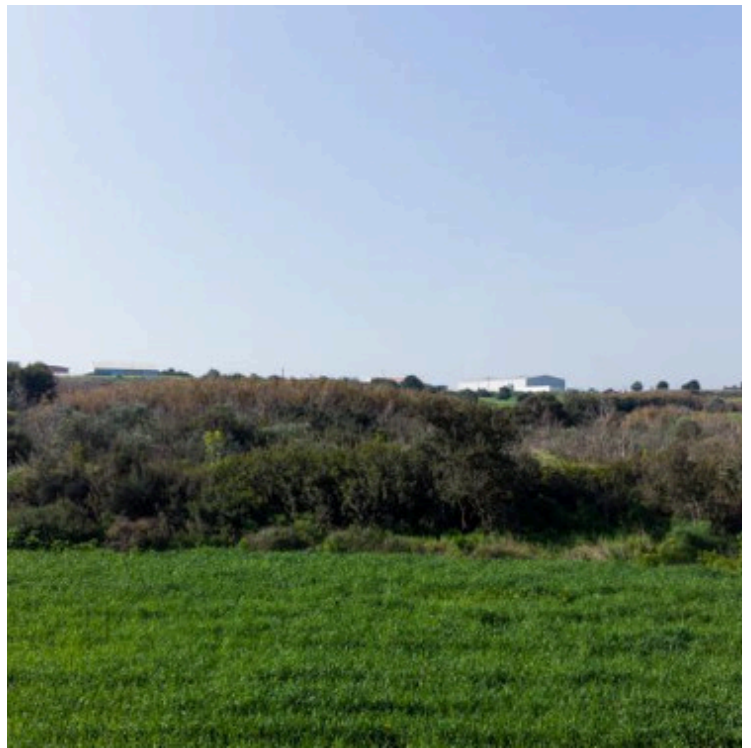
#184961

# Residential land in the Ormideia Community of Larnaca

 Ormideia, Larnaca

**€47,000** +VAT





# Overview

## Specifications

Area

 **3736 m<sup>2</sup>**

|      |                      |            |            |
|------|----------------------|------------|------------|
| Type | <b>Building Plot</b> | Title deed | <b>Yes</b> |
|------|----------------------|------------|------------|

## Description

3736 sq.m., residential land in the Ormideia Community of Larnaca District. It is located approximately 235 meters east of the Larnaca - Agia Napa motorway and approximately 1 km west of the community's Primary School.

The property has a rectangular shape with a flat surface and has access via an unregistered road on its northwestern boundary. It is only 250 meters southwest of a registered road.

A rain water stream passes through the property.

The property falls within Residential Zone H3 (99%) with a building factor of 60% and within Protection Zone Z3 (1%) with a building factor of 1%.



# Additional information


## Planning zones

| Zone | Cover factor | Build factor | Max height | Max floors | Affected percentage |
|------|--------------|--------------|------------|------------|---------------------|
| H3   | 35%          | 60%          | 8.3 m      | 2          | -                   |

## Contact us



**Valando Christodoulou**

 (+357) 99261111

 marinoskineyirou@gmail.com

